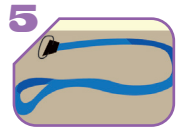
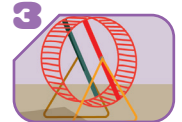
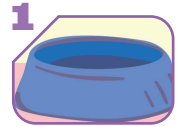
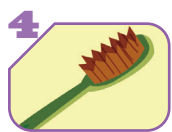


WORKSHEET 3 – DO'S AND DON'TS

1. Look at the pictures and complete the crossword.



					1. P										
					2. E										
3.					T										
					4. S										
5.					H										
					6. O										
					7. P										

2. Read the tips and then choose the best option to complete each sentence.

Tips

Having a dog in your house is a big responsibility. There are many rules to follow to take care of your pet properly:

Feed your dog every day.

Give the dog fresh water.

Keep the water bowl clean.

Take your dog for a walk daily.

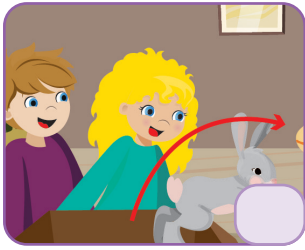
Clean the dog kennel frequently.

Take your dog to the vet once or twice a year.

Remember to love your pet and treat it well.

- You **must** / **mustn't** protect your pet.
- You **must** / **mustn't** keep the water bowl dirty.
- You **must** / **mustn't** be responsible and take care of your dog.
- You **must** / **mustn't** feed your pet daily.
- You **must** / **mustn't** forget to clean the kennel.

3. Read the dialogue and order the pictures.



David: Let's play with your rabbit!

Meg: That's a good idea. Oh no, it jumped out of the box.

David: Where is it now?

Meg: It's outside. It jumped over the fence.

David: Look over there! It's inside the kennel.

Meg: Oh, no! It's not inside the kennel anymore. It's going into the house.

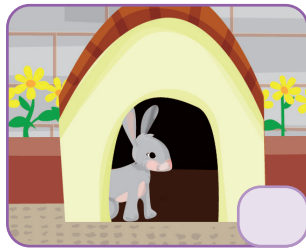
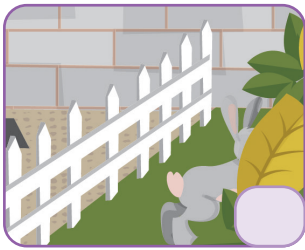
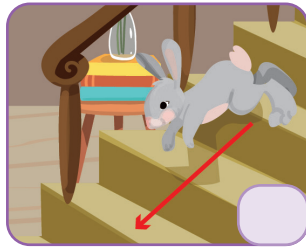
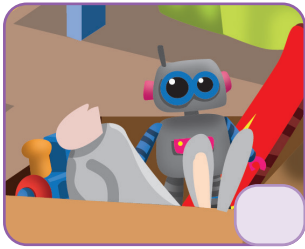
David: It's very fast, it's climbing up the stairs now.

Meg: Let's go upstairs!

David: Too late! It's climbing down the stairs now.

Meg: I can't see it. Where is it?

David: Look, it jumped into the toy box.



4. Read the fact file about the Holland Lop rabbit and complete the sentences.

Specie	Holland Lop.
Size	60 cm.
Colour	Brown, black or white.
Food habits	Fruits and vegetables.
Harmful food	Bread, cheese, walnuts and corn.
Drinks	Water.
Cares	Brush them, cut their nails and clean their cages.

- Holland Lop rabbits are
- They must eat
- They mustn't eat
- You must
- You mustn't