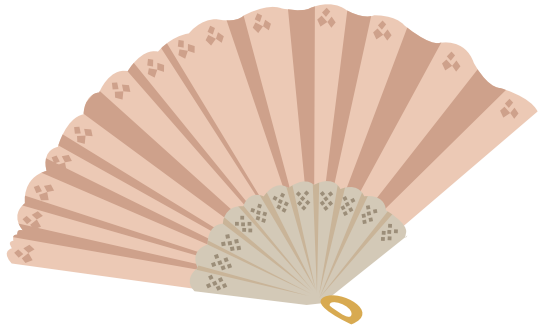


A

a

a

a



ABANICO

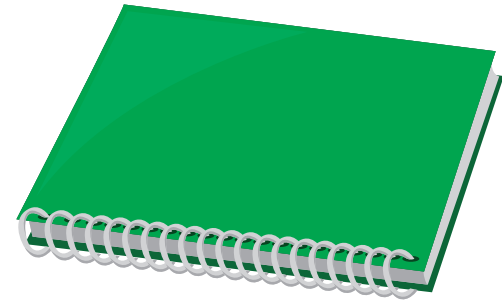
abanico

C

c

c

c



CUADERNO

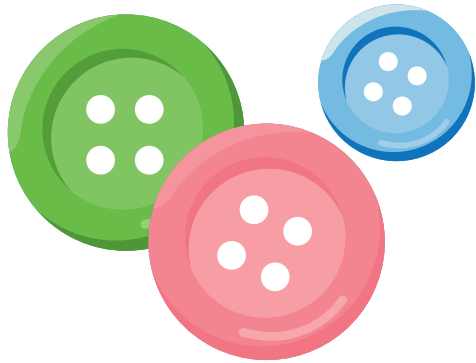
cuaderno

B

b

B

b



BOTONES

botones

D

d

D

d



DADO

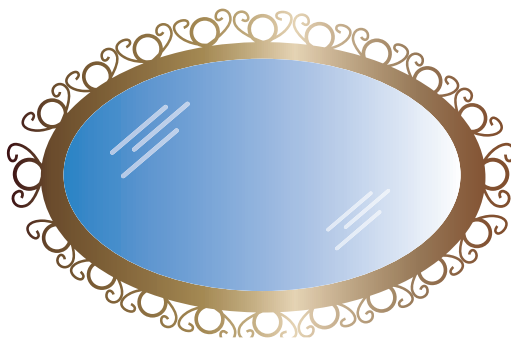
dado

E

e

Ξ

e



ESPEJO

espejo

F

f

F

f



FLORES

flores

G

g

g

g



GATO

gato

H

h

H

h



HILOS

hilos

I

i

g

i



IMÁN

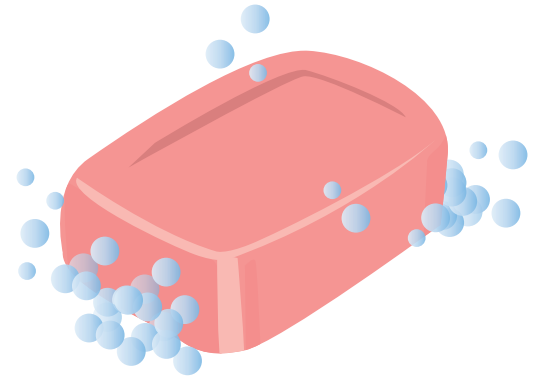
*imán*

J

j

J

j



JABÓN

*jabón*

K

k

K

k



KIMONO

*kimono*

L

l

L

l



LIBROS

*libros*

M

m

m

m



MONEDAS

monedas

N

n

n

n



NIDO

nido

Ñ

ñ

ñ

ñ



ÑOQUIS

ñoquis

O

o

O

o



OSO

oso

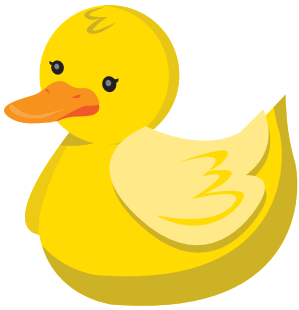


P

p

P

p



PATO

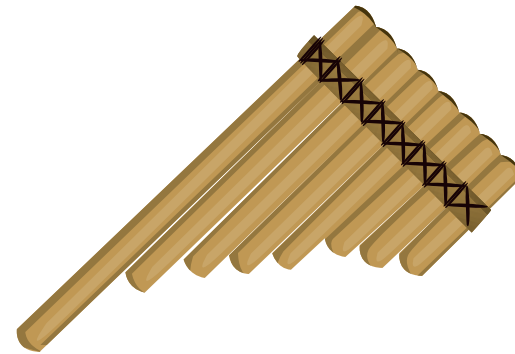
pato

Q

q

Q

q



QUENA

quena

R

r

R

r



RELOJ

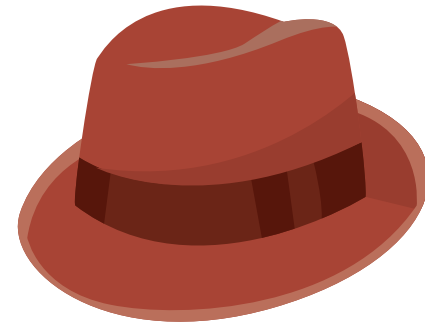
reloj

S

s

S

s



SOMBRERO

sombrero

T

t

Ƨ

Ƨ



TAZA

taza

U

u

u

u



UKELELE

ukelele

V

v

V

v



VASO

vaso

W

w

W

w



WAFLERA

waflera

X

x

X

x



XILOFÓN

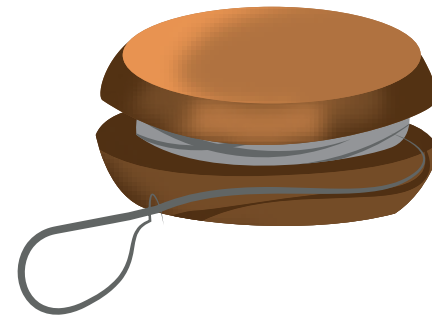
xilofón

Y

y

Y

y



YOYO

yoyo

Z

z

Z

z



ZAPATITOS

*zapatitos*